

Gold Mountain Estates

Owner:
Robert M.Taylor

**Investment Manager
(REMM International):**
Meina Zheng
mennafor168@yahoo.com
626-689-0368



Gold Mountain Estates

Listing parcels:

A) 061-470-006, 007,008 and 009 (+/- 80 acres)

- Identified on the map in blue
- Each parcel has been surveyed

Offered :

- \$7,500/acre
- Seller will finance with good credit

B) 061-470-003, +/- 40 acres

- Located at the top of Bloomer Hill
- Identified on the map in purple
- Fantastic views of the lake and Great Valley

Offered:

- \$12,500/acre
- Seller will finance with good credit



Gold Mountain Estates



Gold Mountain Estates



061-470-003,
+/-40 acres at
the top of
Bloomer Hill

061-470-006,
007,008, and 009
(+/- 80 acres)

Gold Mountain Estates

Gold Mountain Estates faces to the south-west of Lake Oroville, the second largest lake in California, and Las Plumas National Forest borders Gold Mountain Estates to the east.



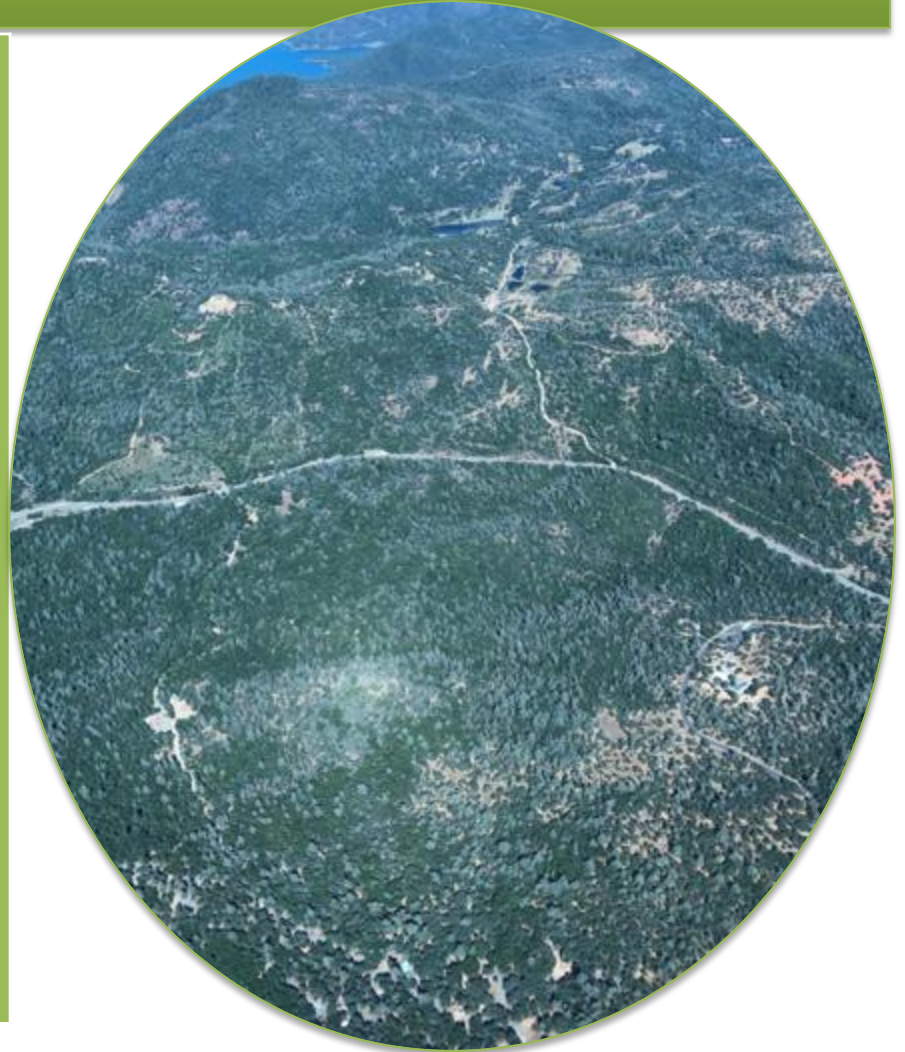
Gold Mountain Estates

**The land is the
highest point
overlooking
beautiful Lake
Oroville and
the
Sacramento
Valley.**



Gold Mountain Estates

On-site roads throughout the parcels are being constructed and will carry corresponding recorded easements.



Why Gold Mountain Estates?

1. Livable (Housing)- Good Feng Shui

❖ One of the most beautiful, serene and scenic areas in California.

❖ The location: a special treasure, unique and cannot be duplicated

Good Feng Shui

and I

view

V

e

n

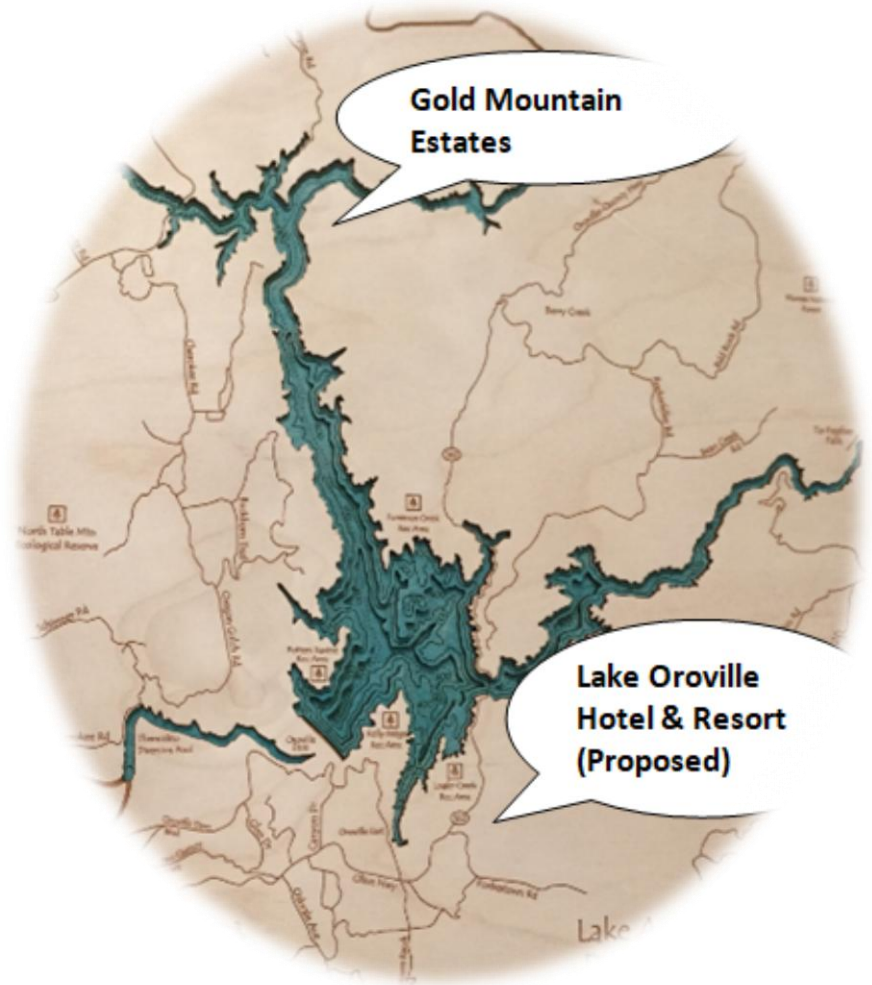
ecia

be dup



Why Gold Mountain Estates

❖ **Lake Oroville, the second largest lake contained within California, a 15,500 acre lake with 167 miles of shoreline**



Why Gold Mountain Estates?

❖ **Lake Oroville Dam, the second-largest earth-filled dam in the world and the tallest one in the United States**



Why Gold Mountain Estates?

❖ **Lake Oroville is the number one bass fishing lake in California and is rated #24 in the county.**



Why Gold Mountain Estates?

✓ Home to the largest freshwater marina west of the Mississippi River, over 1.4 million visitors enjoy water sports, fishing, and local attractions



Why Gold Mountain Estates?

- **Oroville City and the surrounding area is the gateway to the high sierras. One goes for touring sightseeing, camping and year round sports.**



Why Gold Mountain Estates?

❖ **The Oroville area is one of 5 places on earth with a Mediterranean climate.**

✓ **The home of the most abundant salmon fish hatchery on the west coast**



Why Gold Mountain Estates?

- ✓ The home of 5 award-winning wineries
- ✓ The home of the oldest Chinese temple in North America
- ✓ The home to the 6th largest waterfall in the U.S.



Why Gold Mountain Estates?

Public Utilities

- ✓ Near power
- ✓ Well water is available with good access

Hospital

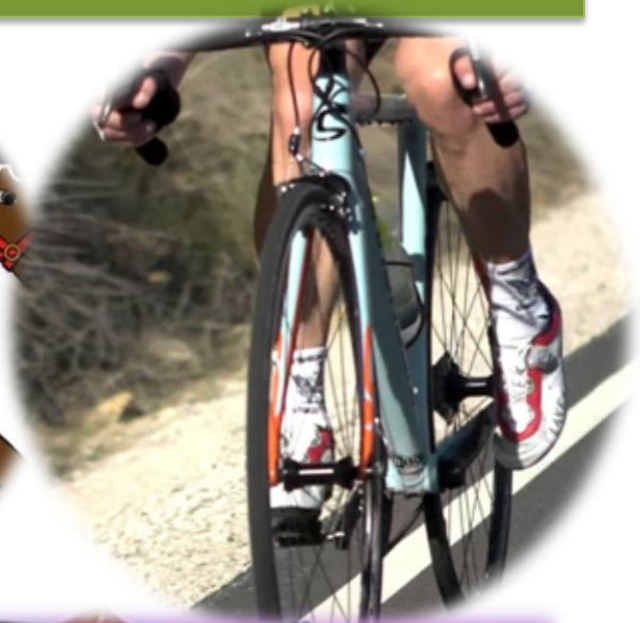
- ✓ \$250,000,000 expansion under construction



Why Gold Mountain Estates?

✓ Many local parks with boating, camping, hiking biking and riding trails

✓ The close proximity of major Indian Casinos



Why Gold Mountain Estates?

✓ **2 hours San Francisco and Reno**

✓ **1 hour to Sacramento International Airport**



Why Gold Mountain Estates?

✓ **Oroville Airport with a 6,000-foot long runway for all types of pleasure, charter and private jets**

✓ **One of the few authorized landing areas for seaplanes servicing the San Francisco area**



Why Gold Mountain Estates?

Population

- TOP 10 CALIFORNIA CITIES UNDER 300,000 WITH LARGEST NUMERIC CHANGE
- Chico, population 112,111 (19,250 increase)
- Irvine, population 280,202 (6,147 increase)
- Santa Clarita, population 218,103 (5,725 increase)
- Ontario, population 178,268 (4,024 increase)
- **Oroville, population 21,773 (3,682 increase)**
- Roseville, population 139,643 (3,383 increase)
- Chula Vista, population 271,411 (3,351 increase)
- Clovis, population 117,003 (3,108 increase)
- Manteca, population 83,781 (2,759 increase)
- Dublin, population 64,577 (2,703 increase)



Why Gold Mountain Estates?

2. Gold

- **Oroville became the second place that gold was discovered in California.**
- **Oroville grew to be the 5th largest city in the state.**



Why Gold Mountain Estates?

•According to “Gold Content and Extraction from a California Site” of Dr. Joseph L. Thomas, possible gold in the hard rock.



Why Gold Mountain Estates

•If you are interested and need more information, we can send you the gold survey.

Gold Content and Extraction from a
California Site

BY

Dr. Joseph L. Thomas

May 28, 2003

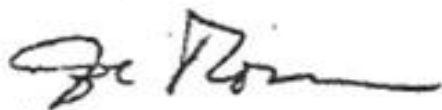
Why Gold Mountain Estates

As I mentioned on the phone, I have completed the assay on the sample you submitted. The analysis is shown below:

<u>Sample ID</u>	<u>Gold Oz/Ton</u>	<u>Platinum Oz/Ton</u>	<u>Palladium Oz/Ton</u>	<u>Rhodium Oz/Ton</u>
5081	0.17	less than 0.02	less than 0.02	less than 0.02

As I mentioned in our discussion, the gold is substantial and merits further investigation. I recommend obtaining samples from 4 more regions considerable distance apart, wherever the same type of rock seems to appear. If you have any questions, please feel free to call me at (714) 278 2641.

Sincerely Yours,



Dr. Joseph L. Thomas
Associate Professor of Chemistry

Why Gold Mountain Estates

3. Other Possible Uses

- Agriculture
- Cattle
- Grazing
- Recreational



Why Gold Mountain Estates

- **Retreat**
- **Timber Production Surrounded by State of California land, and Larger Timber Companies**
- **Plumas National Forest.**



Why Gold Mountain Estates

4. Not Available For Marijuana Growers



Contact Information

**Investment Manager:
REMM International,
Meina Zheng**

mennafor168@yahoo.com

626-689-0368